



Commercial Site with a View

An excellent location with direct access off of Hi-way 83. Highly visible site overlooking Haycreek valley and north Bismarck.

Great uses would include restaurant, retail, office, medical. The site lends itself well to a mixed use facility - retail, office, condos.

- Lot Size - Total property area 6.46 acres or 281,533 sq. ft.
- Total flat area on top (Parcel A & C) 2.06 acres or 89,821 sq. ft.
- Zoned and Platted CG – Commercial
- No Special Assessments
- Full access off and onto Hi-way 83 from north and south lanes

Asking Price \$1,400,000

Chuck Huber
Bismarck Realty Co.
701-222-0232
701-391-9575

Chuck@BismarckRealty.com

BismarckRealty.com

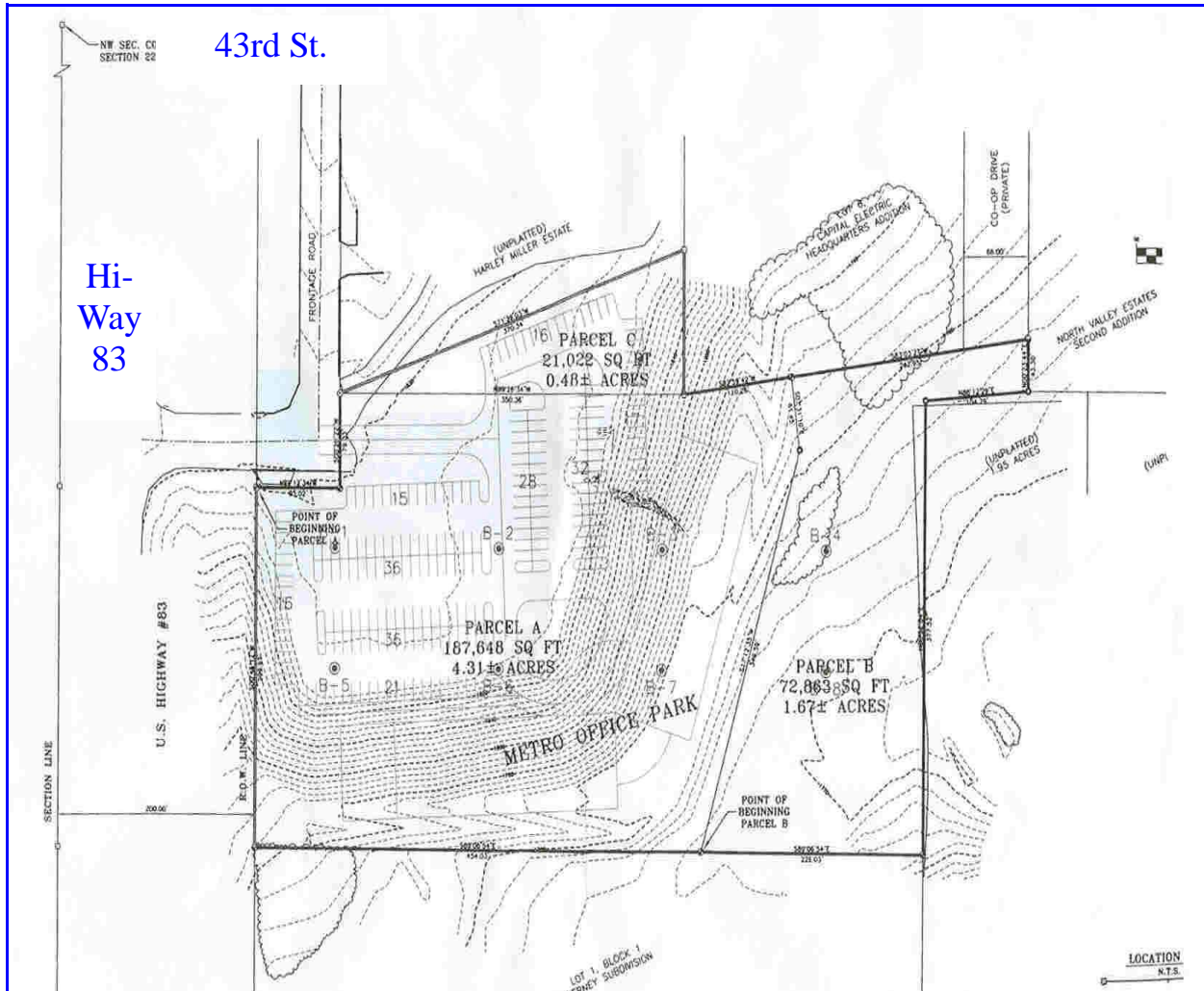
Super Wal-Mart



- Great site, wonderful view, highly visible, excellent access off Hi-way 83 from both directions
- Zoned CG - Commercial - restaurant, office, medical, retail - excellent site for a mixed use facility.

Chuck Huber
Bismarck Realty co. 701-222-0232 701-391-9575

Super Wal-Mart



- Plat of Property outlined in black line
- Total property area 6.46 acres or 281,533 sq. ft.
- Total flat area on top (Parcel A & C) 2.06 acres or 89,821 sq. ft.
- Sloped area could be built on for a dramatic daylight facility

BISMARCK REALTY CO.

